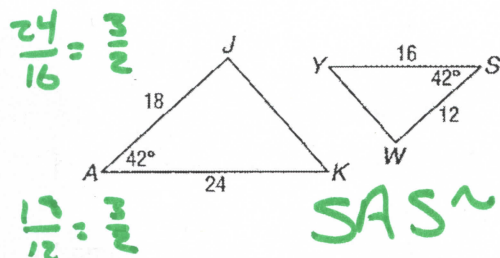
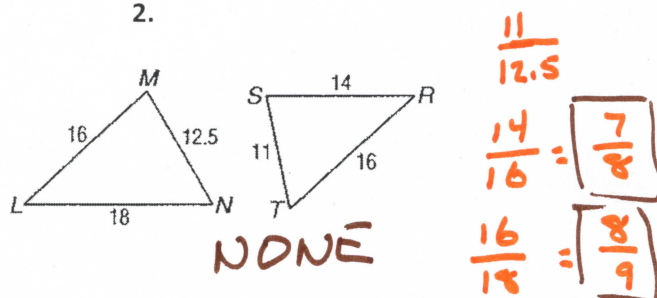


For each pair of triangles, decide if you can use AA~, SAS~, or SSS~. If you can't use any of these, then the answer is none. Remember to find any missing angles if possible.

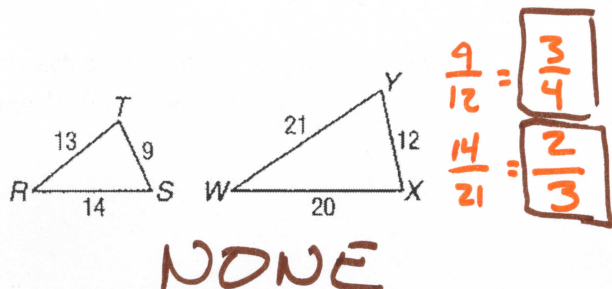
1.



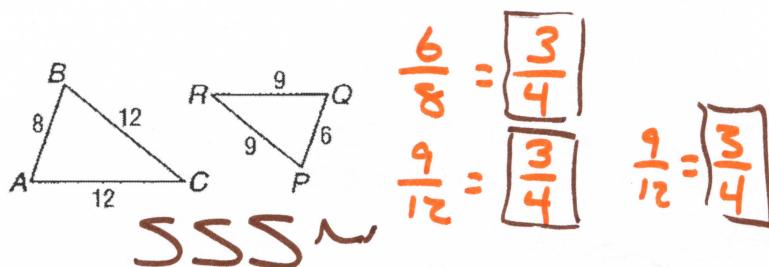
2.



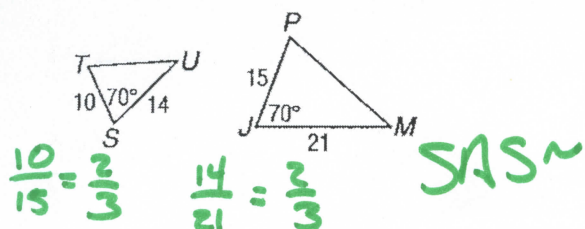
3.



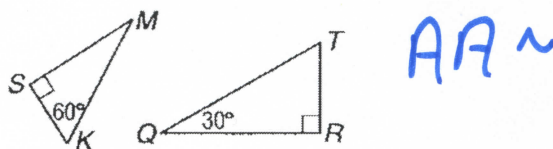
4.



5.



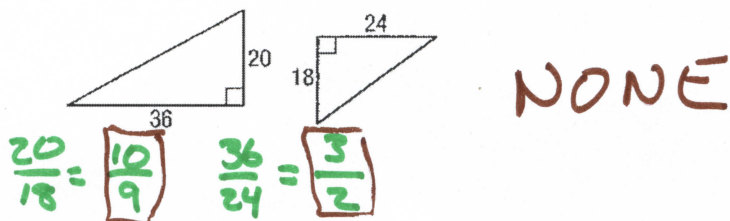
6.



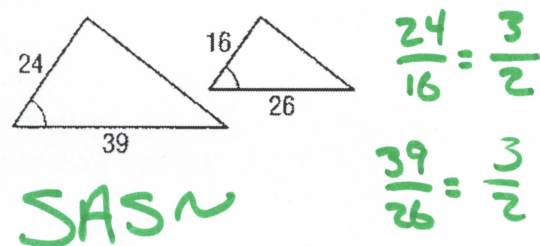
7.



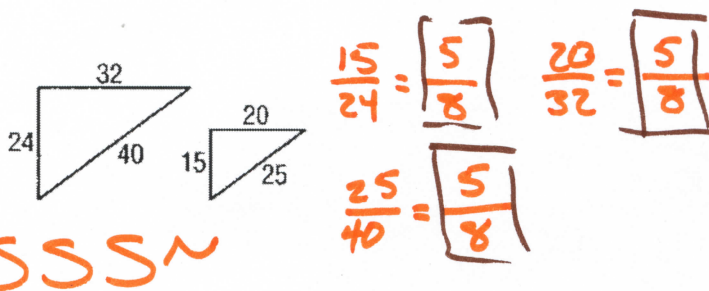
8.



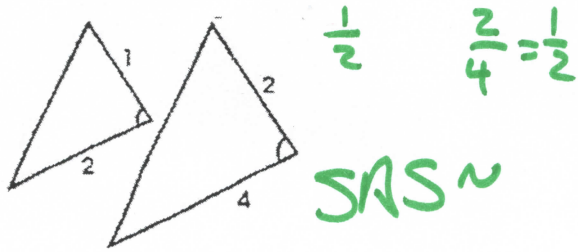
9.



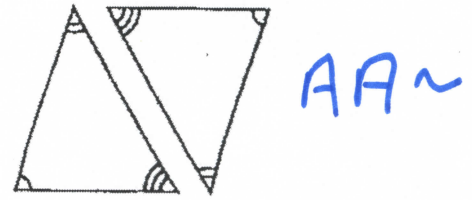
10.



11.

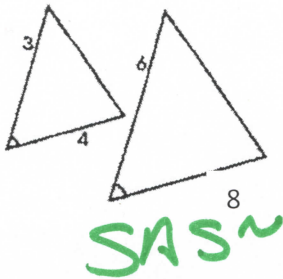


12.

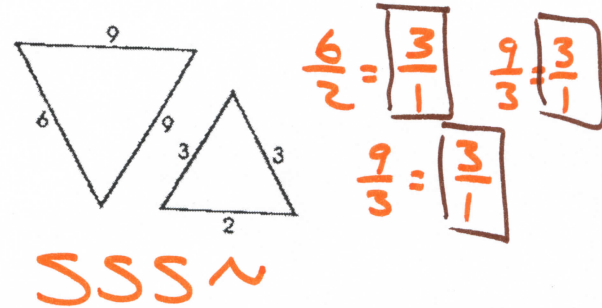


13.

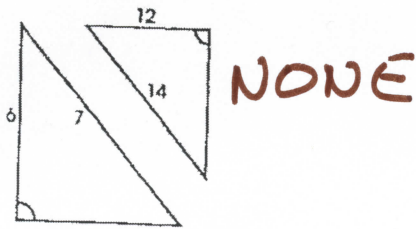
$\frac{3}{6} = \frac{1}{2}$
 $\frac{4}{8} = \frac{1}{2}$



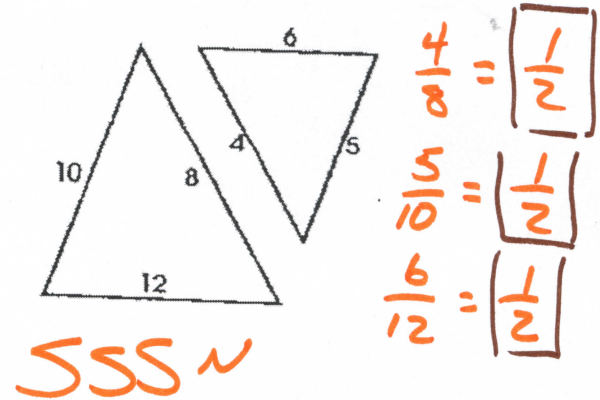
14.



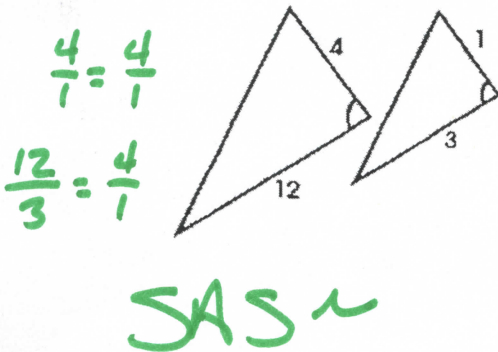
15.



16.



17.



18.

